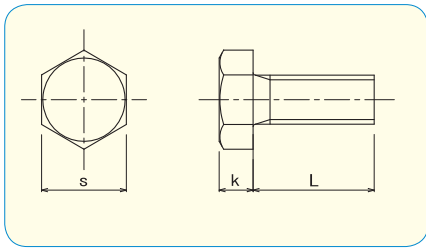


NOTE: Zinc 3Cr. Plated and Black 3Cr. Plated are RoHS compliant trivalent finishes



RoHS Directive Compliance

HEX HEAD CAP SCREW JIS B1180 appendix [Full Thread]



- **Material · plating**
 Steel 4.8 / Zinc 3Cr. Plated
 Steel 4.8 / Zinc Black 3Cr. Plated



How to order or inquire: R830-B1180F-finish code diameter x length

Example: R830-B1180F-CR3 4x16

Finish codes: CR3 for Zinc 3Cr. Plated, CR3B for Black 3Cr. Plated

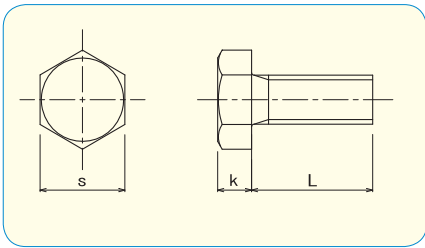
	M3	M4	M5	M6	M8	M10	M12	M14	M16
s	5.5	7	8	10	13	17	19	22	24
k	2	2.8	3.5	4	5.5	7	8	9	10

d		pcs / Box							
L	M3	M4	M5	M6	M8	M10	M12	M14	M16
6	5000	2000	1000						
8	5000	2000	1000	500					
10	4000	1000	1000	800	300				
12	2000	1000	1000	800	400				
14		1000	1000	800	350				
15	2000	1000	1000	700	350	200			
16	2000	1000	1000	700	350	200			
18		1000	500	700	300				
20	1000	1000	500	600	300	200	100		
22	1000	1000	500	600					
25	1000	1000	500	600	300	200	100	100	70
30	1000	1000	500	500	300	200	100	90	60
35	1000	500	500	450	200	150	100	80	50
40		500	500	400	250	100	100	70	50
45		500	200	350	250	100	100	70	50
50		200	200	300	250	100	100	60	50
55			200	250	200	100	50	50	40
60			200	250	200	100	50	50	40
65			200	250	200	100	50	50	40
70				200	100	100	50	50	40
75				200	100	100	50	50	40
80				250	100	100	50	40	40
85					150				
90				200	150	90	50	40	40
100				200	150	80	50	30	30
110				200	100	70	50		
120				150	100	70	50		
130				150	100	60	40		
140				150	100	60	40		
150				150	100	60	40		

HEX HEAD CAP SCREW JIS B1180 appendix [Full Thread]



RoHS Directive Compliance



●Material
Stainless Steel A2



How to order or inquire: R830-B1180F-material code diameter x length

Example: R830-B1180F-A2 4x16

Material codes: A2 for Stainless Steel A2

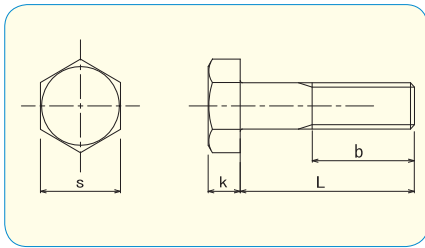
	M3	M4	M5	M6	M8	M10	M12	M14	M16	M18	M20	M24	M30
s	5.5	7	8	10	13	17	19	22	24	27	30	36	46
k	2	2.8	3.5	4	5.5	7	8	9	10	12	13	15	19

d		pcs / Box												
L	d	M3	M4	M5	M6	M8	M10	M12	M14	M16	M18	M20	M24	M30
6	6	2000	1000	1000										
8	8	2000	1000	1000	700									
10	10	2000	1000	1000	400	200								
12	12	2000	1000	500	400	200								
14	14		1000	500	400	200								
15	15	1500	1000	500	400	200	100							
16	16	1500	1000	500	400	200	100							
18	18		500	500	300	200	100							
20	20	1000	500	500	300	200	100	100						
22	22			500	300	200								
25	25	1000	500	300	300	200	100	100	50	50				
30	30	1000	500	300	300	100	100	100	50	50	40	35		
35	35	1000	300	300	300	100	100	100	100	50	40	35		
40	40	1000	300	200	300	100	100	100	50	50	40	35		
45	45		300	200	200	100	100	100	50	50	30	30		
50	50		200	200	200	100	100	50	50	50	30	30		12
55	55		200	200	200	100	100	50	50	40	30	25		12
60	60		200	200	200	100	100	50	50	30	30	25	20	10
65	65			200	200	100	100	50	40	30	25	25	20	10
70	70			150	100	100	50	50	40	30	25	20		10
75	75			150	100	100	50	50	40	30	25	20		
80	80			150	100	100	50	50	30	30	25	20		
85	85			150	100	100	50	50		30		20		
90	90			100	100	100	50	50	30	30	20	20		
100	100			100	100	100	50	50	30	30	20	20		
110	110				150	50	50	25		20		15		
120	120				150	50	50	40		20		15		
130	130				150	50	50	30		20		15		
140	140				150	50	50	30		20		15		
150	150				150	50	50	30		20		15		
160	160					50	40	30		15				
170	170					50	40	30		15				
180	180					50	40	30		15				
190	190					50	40	30						
200	200					50	40	30		15				
210	210							25						
220	220							25		10				
230	230							25						
250	250						30	25		10				
300	300						30	25		10				



RoHS Directive Compliance

HEX HEAD CAP SCREW JIS B1180 appendix [Partial Thread]



- **Material · plating**
 Steel 4.8 / Zinc 3Cr. Plated
 Steel 4.8 / Zinc Black 3Cr. Plated

How to order or inquire: R830-B1180P-finish code diameter x length

Example: R830-B1180P-CR3 4x16

Finish codes: CR3 for Zinc 3Cr. Plated, CR3B for Black 3Cr. Plated

	M8	M10	M12	M14	M16	M18	M20	M22	M24
s	13	17	19	22	24	27	30	32	36
k	5.5	7	8	9	10	12	13	14	15

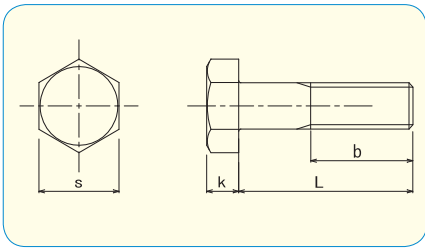
pcs / Box

L \ d	M8	M10	M12	M14	M16	M18	M20	M22	M24
25									
30	300	200							
35	200	150	100						
40	250	100	100	70					
45	250	100	100	70	1				
50	250	100	100	60	1	1			
55	200	100	50	50	1	1	1		
60	200	100	50	50	1	1	1	1	
65	200	100	50	50	1	1	1	1	1
70	100	100	50	50	1	1	1	1	1
75	100	100	50	50	1	1	1	1	1
80	1	1	1	1	1	1	1	1	1
85	1	1	1	1	1	1	1	1	1
90	1	1	1	1	1	1	1	1	1
100	1	1	1	1	1	1	1	1	1
110	1	1	1	1	1	1	1	1	1
120	1	1	1	1	1	1	1	1	1
130	1	1	1	1	1	1	1	1	1
140	1	1	1	1	1	1	1	1	1
150	1	1	1	1	1	1	1	1	1
160					1			1	1
170	1				1		1	1	1
180					1		1	1	1
190					1		1	1	1
200					1		1	1	1

HEX HEAD CAP SCREW JIS B1180 appendix [Partial Thread]



RoHS Directive Compliance



● **Material**
Stainless Steel A2



How to order or inquire: R830-B1180P-material code diameter x length

Example: R830-B1180P-A2 4x16

Material codes: A2 for Stainless Steel A2

	M6	M8	M10	M12	M14	M16	M18	M20	M22	M24	M30
s	10	13	17	19	22	24	27	30	32	36	46
k	4	5.5	7	8	9	10	12	13	14	15	19

		pcs / Box									
L \ d	M6	M8	M10	M12	M14	M16	M18	M20	M22	M24	M30
30		100									
35			100								
40		100	100	100	50				20	15	
45			100	100	50	50			20	15	
50		100	100	50	50	50		30	20	15	
55		100	100	50	40	40		25	20	15	
60		100	100	50	40	30	30	25	20	15	
65		100	100	50	40	30	25	25	20	15	
70		100	50	50	30	30	25	20	15	15	
75		100	50	50	40	30	25	20	15	15	10
80	100	100	50	50	30	30	25	20	15	15	10
85	100	100	50	50		30	20	20	15	15	8
90	150	100	50	50	30	30	20	20	15	10	8
100	150	100	50	50	30	30	20	20	15	10	8
110	150	50	50	40		20		15	10	10	8
120	150	50	50	40		20		15	10	10	8
130	150	50	50	40		20		15	10	10	6
140	150	50	50	40		20		15	10	10	6
150	150	50	50	40		20		15	10	10	6
160		50	40	30		20		15	10	10	6
170		50	40	30		20		15	10	1	1
180		50	40	30		15		15	10	1	1
190		50	40	30		20		15	10	1	1
200		50	40	30		20		15	10	1	1
210		50	30	25		10		1	1	1	1
220		50	30	25		10		1	1	1	1
230		50	30	25		10		1	1	1	1
240		50	30	25		10		1	1	1	1
250		50	30	25		10		1	1	1	1
260			30	25				1	1	1	1
270			30	25				1	1	1	1
280			30	25				1	1	1	1
290			30	25							
300			30	25		10					
310				20							
320				20							
330				20							
340				20							
350				1							