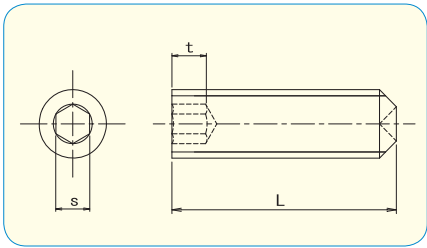


NOTE: Zinc 3Cr. Plated and Black 3Cr. Plated are RoHS compliant trivalent finishes

# HEX SOCKET SET SCREW CUP POINT ISO 4029 / JIS B1177 / DIN 916



- **Material · plating**  
 Steel 45H / Zinc 3Cr. Plated  
 Steel 45H / Zinc Black 3Cr. Plated



How to order or inquire: R830-916-finish code diameter x length

Example: R830-916-CR3 4x10

Finish codes: CR3 for Zinc 3Cr. Plated, CR3B for Black 3Cr. Plated

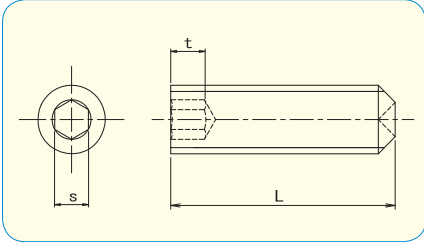
	M2	M2.5	M3	M4	M5	M6	M8	M10
s	0.9	1.3	1.5	2	2.5	3	4	5
t	1.7	2	2	2.5	3	3.5	5	6

pcs / Box

L \ d	M2	M2.5	M3	M4	M5	M6	M8	M10
2	1000							
3	1000		1000	1000				
4	1000	1000	1000	1000	1000			
5	1000	1000	1000	1000	1000			
6		1000	1000	1000	1000	1000		
8			1000	1000	1000	1000	500	
10	1000		1000	1000	1000	1000	500	
12			1000	1000	1000	1000	500	
14				1000	1000			
15			1000	1000	1000	1000		
16			1000	1000	1000	1000		
18			1000	1000				
20			1000	1000	1000	1000	500	* 500
22						500		
25	1000			1000	500	500	500	
30					500	500	200	
35						500	200	
40						500	200	

\* ... Zinc 3Cr. Plated only

# HEX SOCKET SET SCREW CUP POINT ISO 4029 / JIS B1177 / DIN 916



● **Material**  
Stainless Steel A2



How to order or inquire: R830-916A2 diameter x length

Example: R830-916A2 4x16

Material codes: A2 for Stainless Steel A2

	M1.6	M2	M2.5	M3	M4	M5	M6	M8	M10	M12	M16
s	0.7	0.9	1.3	1.5	2	2.5	3	4	5	6	8
t	1.5	1.7	2	2	2.5	3	3.5	5	6	8	10

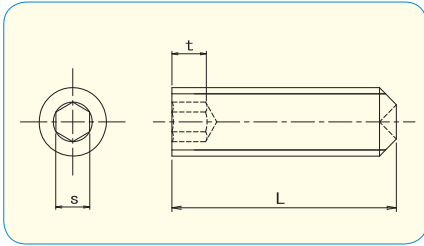
pcs / Box

L \ d	M1.6	M2	M2.5	M3	M4	M5	M6	M8	M10	M12	M16
2	300	300									
2.5	300	300	300	300							
3	300	300	300	300	300	200					
4	300	300	300	300	300	200					
5	300	300	300	300	300	200	200				
6	300	300	300	300	300	200	200	100			
8	300	300	300	300	300	200	200	100	100		
10		300	300	300	300	200	200	100	100	100	
12		300	300	300	300	200	200	100	100	100	
14				300	300	200	200	100	100	100	
15		300	300	300	300	200	200	100	100	100	30
16		300	300	300	300	200	200	100	100	100	30
18				300	300	200	200	100	100	100	
20				300	300	200	200	100	100	100	30
22				300	300	200	200	100	100	100	
25				300	300	200	200	100	100	100	30
30				300	300	200	200	100	100	100	30
35				300	300	200	200	100	100	100	30
40				300	300	200	200	100	100	100	30
45					300	200	200	100	100	100	30
50					300	200	200	100	100	100	30
55							200	100	100	100	30
60							200	100	100	100	30
65									100	100	30
70									100	100	30
75									100	100	30
80									100	100	30
90											30
100											30

**SUS 316L**

**TITAN**

**HEX SOCKET SET SCREW CUP POINT ISO 4029 / JIS B1177 / DIN 916**



How to order or inquire: R830-916-material code diameter x length

Example: R830-916-316L 4x16

Material codes: 316L for Stainless Steel 316L

	M3	M4	M5	M6	M8	M10	M12
s	1.5	2	2.5	3	4	5	6
t	2	2.5	3	3.5	5	6	8

● **Material**

**SUS 316L** Stainless Steel A4

		pcs / Box					
L \ d	M3	M4	M5	M6	M8	M10	M12
3	200						
4	200	200					
5	200	200	200				
6	200	200	200	100			
8	200	200	200	100	100		
10	200	200	200	100	100	100	
12	200	200	200	100	100	100	100
14	200	200	200	100	100		
15	200	200	200	100	100	100	100
16	200	200	200	100	100	100	100
18	200	200	200	100	100	100	100
20	200	200	200	100	100	100	100
25		200	200	100	100	100	100
30		200	200	100	100	100	100
35			200	100	100	100	100
40			200	100	100	100	100
45				100	100	100	100
50				100	100	100	100
60						100	100



● **Material**

or inquire: R830-DIN 916-material code diameter x length

Example: R830-DIN 916-TI 4x16

Material codes: TI for Titanium

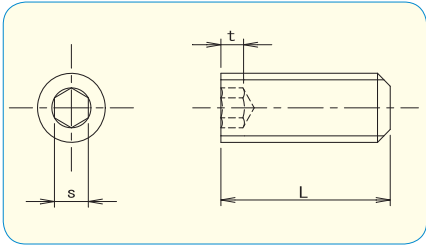
**TITAN**

		pcs / Box			
L \ d	M4	M5	M6	M8	
6	200	150	150		
8	200	150	150	100	
10	200	150	150	100	
12	200	150	150	100	
15	200	150	150	100	
20			150	100	



NOTE: Zinc 3Cr. Plated and Black 3Cr. Plated are RoHS compliant trivalent finishes

# HEX SOCKET SET SCREW FLAT POINT ISO 4026 / JIS B1177 / DIN 913



- **Material · plating**
- Steel 45H / Zinc 3Cr. Plated
- Steel 45H / Zinc Black 3Cr. Plated



How to order or inquire: R830-913-finish code diameter x length

Example: R830-913-CR3 4x10

Finish codes: CR3 for Zinc 3Cr. Plated, CR3B for Black 3Cr. Plated

	M2	M2.5	M3	M4	M5	M6	M8	M10	M12
s	0.9	1.3	1.5	2	2.5	3	4	5	6
t	1.7	2	2	2.5	3	3.5	5	6	8

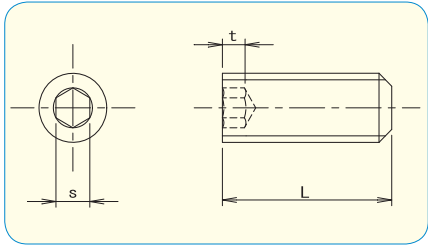
pcs / Box

L \ d	M2	M2.5	M3	M4	M5	M6	M8	M10	M12
2	1000	** 1000							
3	** 1000	1000	1000	** 1000					
4	1000	** 1000	1000	1000	1000				
5	1000	1000	1000	1000	1000	1000			
6	** 1000		1000	1000	1000	1000			
8	** 1000	** 1000	1000	1000	1000	1000	500		
10	** 1000	** 1000	1000	1000	1000	1000	500	500	
12			1000	1000	** 1000	1000		500	* 500
14			** 1000	1000				500	
15			1000	1000	1000	1000	500	** 500	
16			1000	1000	1000	* 1000			
18				* 1000	** 1000	** 1000			
20			** 1000	* 1000	1000	1000	500	** 500	
25			** 1000	** 1000	500	500	** 500	200	
30				** 1000	500	** 500	200	200	
35					** 500		** 200	200	
40					** 500		200		

\* ... Zinc 3Cr. Plated only

\*\* ... Zinc Black 3Cr. Plated only

# HEX SOCKET SET SCREW FLAT POINT ISO 4026 / JIS B1177 / DIN 913



How to order or inquire: R830-913A2 diameter x length

Example: R830-913A2 4x16

Material codes: A2 for Stainless Steel A2

	M3	M4	M5	M6	M8	M10	M12	M16	M20	M24
s	1.5	2	2.5	3	4	5	6	8	10	12
t	2	2.5	3	3.5	5	6	8	10	12	15

**Material**

Stainless Steel A2

pcs / Box

L \ d	M3	M4	M5	M6	M8	M10	M12
3	1000	1000					
4	1000	1000	1000	1000			
5	1000	1000	1000	1000			
6	1000	1000	1000	1000	500		
8	1000	1000	1000	1000	500	500	
10	1000	1000	1000	1000	500	500	
12	1000	1000	1000	1000	500	500	500
14	1000	1000	1000	1000	500	500	
15	1000	1000	1000	1000	500	500	500
16	1000	1000	1000	1000	500	500	
18	1000	1000	1000	1000	500	500	200
20	1000	1000	1000	1000	500	500	200
25		1000	500	500	500	200	200
30		1000	500	500	200	200	200
35							200
40					200		100

How to order or inquire: R830-913-material code diameter x length

Example: R830-913-316L 4x16

Material codes: 316L for Stainless Steel 316L

**Material**

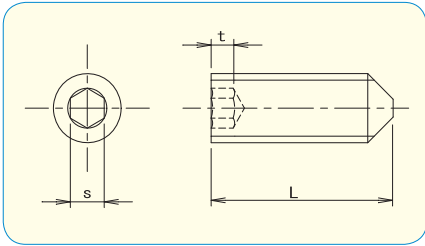
**SUS 316L** Stainless Steel A4

pcs / Box

L \ d	M16	M20	M24
16	30		
20	30	15	
25	30	15	
30	30	15	
35	30	15	
40	30	15	10
45	30	15	
50	30	15	10
60	30	15	10
70	30	15	
80	30	15	10
100	30	15	10



# HEX SOCKET SET SCREW CONE POINT ISO 4027 / JIS B1177 / DIN 914



How to order or inquire: R830-914-finish code diameter x length

Example: R830-914-CR3 4x10

Finish codes: CR3 for Zinc 3Cr. Plated, CR3B for Black 3Cr. Plated

	M2	M2.5	M3	M4	M5	M6	M8	M10	M12
s	0.9	1.3	1.5	2	2.5	3	4	5	6
t	1.7	2	2	2.5	3	3.5	5	6	8

**Material - plating**

Steel 45H / Zinc 3Cr. Plated

Steel 45H / Zinc Black 3Cr. Plated

pcs / Box

L \ d	M2	M2.5	M3	M4	M5	M6	M8	M10	M12
2	1000								
3	1000	1000	1000						
4	1000	1000	1000	1000	1000				
5	1000	1000	1000	1000	1000	1000			
6	1000	1000	1000	1000	1000	1000	500		
8	1000	1000	1000	1000	1000	1000	500	500	
10			1000	1000	1000	1000	500	500	500
12			1000	1000	1000	1000	500	500	500
14			1000	1000	1000	1000	500	500	500
15			1000	1000	1000	1000	500	500	500
16			1000	1000	1000	1000	500	500	500
18			1000	1000	1000	1000	500	500	200
20			1000	1000	1000	1000	500	500	200
25			1000	1000	500	500	500	200	200
30			1000	1000	500	500	200	200	200
35				500	500	500	200	200	200
40				500	500	500	200	200	100

How to order or inquire: R830-914A2 diameter x length

Example: R830-914A2 4x16

Material codes: A2 for Stainless Steel A2

**Material - plating**

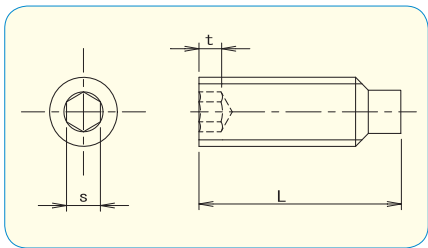
Stainless Steel A2

pcs / Box

L \ d	M3	M4	M5	M6
3	1000			
4	1000	1000		
5	1000	1000	500	
6	1000	1000	500	500
8	1000	1000	500	500
10		1000	500	500
12		1000		500
15		1000		

NOTE: Zinc 3Cr. Plated and Black 3Cr. Plated are RoHS compliant trivalent finishes

# HEX SOCKET SET SCREW DOG POINT ISO 4028 / JIS B1177 / DIN 915



- **Material · plating**  
Steel 45H / Zinc 3Cr. Plated



How to order or inquire: R830-915-finish code diameter x length

Example: R830-915-CR3 4x10

Finish codes: CR3 for Zinc 3Cr. Plated

	M5	M6
s	2.5	3
t	3	3.5

pcs / Box

L \ d	M5	M6
8	1000	
25		500