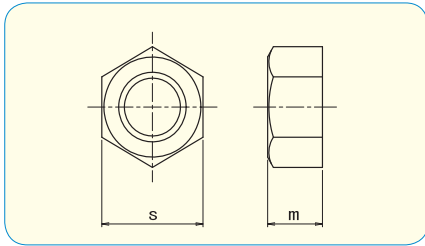


NOTE: Zinc 3Cr. Plated and Black 3Cr. Plated are RoHS compliant trivalent finishes

## HEX NUT, JIS type 1 JIS B1181 appendix



How to order or inquire: R830-B1181-finish code diameter  
 Example: R830-B1181-CR3 10  
 Finish codes: CR3 for Zinc 3Cr. Plated, CR3B for Black 3Cr. Plated

How to order or inquire: R830-B1181-material code diameter  
 Example: R830-B1181-A2 10  
 Material codes: A2 for Stainless Steel A2

● **Material - plating**

Steel Class6 / Zinc 3Cr. Plated  
 Steel Class6 / Zinc Black 3Cr. Plated

● **Material**

Stainless Steel A2

|      | Box q'ty | SIZE |     |
|------|----------|------|-----|
|      |          | s    | m   |
| M2   | 16000    | 4    | 1.6 |
| M2.3 | 5000     | 4.5  | 1.8 |
| M2.5 | 4000     | 5    | 2   |
| M2.6 | 8000     | 5    | 2   |
| M3   | 5000     | 5.5  | 2.4 |
| M3.5 | 3500     | 6    | 2.8 |
| M4   | 2500     | 7    | 3.2 |
| M5   | 1500     | 8    | 4   |
| M6   | 1000     | 10   | 5   |
| M8   | 600      | 13   | 6.5 |
| M10  | 300      | 17   | 8   |
| M12  | 200      | 19   | 10  |
| M14  | 130      | 22   | 11  |
| M16  | 100      | 24   | 13  |
| M18  | 70       | 27   | 15  |
| M20  | 50       | 30   | 16  |



|      | Box q'ty | SIZE |     |
|------|----------|------|-----|
|      |          | s    | m   |
| M2   | 8000     | 4    | 1.6 |
| M2.5 | 4000     | 5    | 2   |
| M2.6 | 4000     | 5    | 2   |
| M3   | 4000     | 5.5  | 2.4 |
| M3.5 | 2000     | 6    | 2.8 |
| M4   | 2000     | 7    | 3.2 |
| M5   | 1000     | 8    | 4   |
| M6   | 1500     | 10   | 5   |
| M8   | 600      | 13   | 6.5 |
| M10  | 300      | 17   | 8   |
| M12  | 200      | 19   | 10  |
| M14  | 120      | 22   | 11  |
| M16  | 100      | 24   | 13  |
| M18  | 60       | 27   | 15  |
| M20  | 50       | 30   | 16  |
| M22  | 100      | 32   | 18  |
| M24  | 75       | 36   | 19  |
| M27  | 50       | 41   | 22  |
| M30  | 35       | 46   | 24  |
| M36  | 20       | 55   | 29  |
| M42  | 10       | 65   | 34  |



## HEX NUT, JIS type 1 JIS B1181 appendix

How to order or inquire: R830-B1181-material code diameter

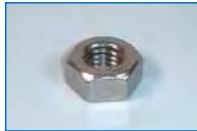
Example: R830-B1181-316L 10

Material codes: 316L for Stainless Steel 316L

● **Material**

**SUS 316L** Stainless Steel A4

|     | Box q'ty | SIZE |     |
|-----|----------|------|-----|
|     |          | s    | m   |
| M2  | 100      | 4    | 1.6 |
| M3  | 100      | 5.5  | 2.4 |
| M4  | 100      | 7    | 3.2 |
| M5  | 100      | 8    | 4   |
| M6  | 100      | 10   | 5   |
| M8  | 100      | 13   | 6.5 |
| M10 | 100      | 17   | 8   |
| M12 | 100      | 19   | 10  |
| M14 | 100      | 22   | 11  |
| M16 | 100      | 24   | 13  |
| M18 | 100      | 27   | 15  |
| M20 | 100      | 30   | 16  |
| M22 | 100      | 32   | 18  |
| M24 | 100      | 36   | 19  |
| M27 | 100      | 41   | 22  |
| M30 | 100      | 46   | 24  |
| M33 | 100      | 50   | 26  |
| M36 | 100      | 55   | 29  |
| M39 | 100      | 60   | 31  |
| M42 | 100      | 65   | 34  |
| M45 | 100      | 70   | 36  |
| M48 | 100      | 75   | 38  |
| M52 | 100      | 80   | 42  |



How to order or inquire: R830-B1181-material code diameter

Example: R830-B1181-310 12

Material codes: 310 for Stainless Steel 310

● **Material**

**SUS 310S**  
Stainless Steel

|     | Box q'ty | SIZE |     |
|-----|----------|------|-----|
|     |          | s    | m   |
| M5  | 100      | 8    | 4   |
| M6  | 100      | 10   | 5   |
| M8  | 100      | 13   | 6.5 |
| M10 | 100      | 17   | 8   |
| M12 | 100      | 19   | 10  |
| M14 | 100      | 22   | 11  |
| M16 | 100      | 24   | 13  |
| M18 | 100      | 27   | 15  |
| M20 | 100      | 30   | 16  |
| M22 | 100      | 32   | 18  |
| M24 | 100      | 36   | 19  |
| M27 | 100      | 41   | 22  |
| M30 | 100      | 46   | 24  |
| M33 | 100      | 50   | 26  |
| M36 | 100      | 55   | 29  |



How to order or inquire: R830-B1181-material code diameter

Example: R830-B1181-310 12

Material codes: TI for Titanium

● **Material**

**TITAN**

|     | Box q'ty | SIZE |     |
|-----|----------|------|-----|
|     |          | s    | m   |
| M3  | 200      | 5.5  | 2.4 |
| M4  | 200      | 7    | 3.2 |
| M5  | 200      | 8    | 4   |
| M6  | 200      | 10   | 5   |
| M8  | 200      | 13   | 6.5 |
| M10 | 200      | 17   | 8   |
| M12 | 200      | 19   | 10  |
| M14 | 200      | 22   | 11  |
| M16 | 200      | 24   | 13  |
| M18 | 200      | 27   | 15  |
| M20 | 200      | 30   | 16  |
| M22 | 200      | 32   | 18  |
| M24 | 200      | 36   | 19  |
| M30 | 200      | 46   | 24  |



How to order or inquire: R830-B1181-finish code diameter

Example: R830-B1181-DI 12

Finish codes: DI for DISGO plated

● **Material · plating**

S45C / **DISGO**

HRC23~28

|     | Box q'ty | SIZE |     |
|-----|----------|------|-----|
|     |          | s    | m   |
| M8  | 600      | 13   | 6.5 |
| M10 | 300      | 17   | 8   |
| M12 | 200      | 19   | 10  |
| M16 | 100      | 24   | 13  |

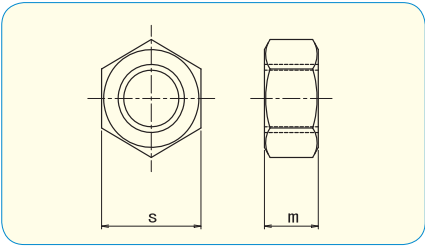


**High Rustproof Plating**

**DISGO**

- No Hydrogen-Embrittlement.
- No Cr. contained.
- Special plating for High tensile Fasteners. (class 8.8 / 10.9 / 12.9)

# HEX NUT, JIS type 2 JIS B1181 appendix



How to order or inquire: R830-B1181-2-finish code diameter  
 Example: R830-B1181-2-CR3 10  
 Finish codes: CR3 for Zinc 3Cr. Plated, CR3B for Black 3Cr. Plated

How to order or inquire: R830-B1181-2-material code diameter  
 Example: R830-B1181-2-A2 10  
 Material codes: A2 for Stainless Steel A2

**Material - plating**

Steel Class6 / Zinc 3Cr. Plated  
 Steel Class6 / Zinc Black 3Cr. Plated

**Material**

Stainless Steel A2

|      | Box q'ty | SIZE |     |
|------|----------|------|-----|
|      |          | s    | m   |
| M2   | 8000     | 4    | 1.6 |
| M2.3 | 5000     | 4.5  | 1.8 |
| M2.5 | 4000     | 5    | 2   |
| M2.6 | 4000     | 5    | 2   |
| M3   | 5000     | 5.5  | 2.4 |
| M3.5 | 3500     | 6    | 2.8 |
| M4   | 2500     | 7    | 3.2 |
| M5   | 1500     | 8    | 4   |
| M6   | 1500     | 10   | 5   |
| M8   | 600      | 13   | 6.5 |
| M10  | 300      | 17   | 8   |
| M12  | 200      | 19   | 10  |
| M16  | 100      | 24   | 13  |

|      | Box q'ty | SIZE |     |
|------|----------|------|-----|
|      |          | s    | m   |
| M2   | 8000     | 4    | 1.6 |
| M2.3 | 5000     | 4.5  | 1.8 |
| M2.5 | 4000     | 5    | 2   |
| M3   | 2000     | 5.5  | 2.4 |
| M4   | 1500     | 7    | 3.2 |
| M5   | 1000     | 8    | 4   |
| M6   | 500      | 10   | 5   |
| M8   | 500      | 13   | 6.5 |
| M10  | 300      | 17   | 8   |
| M12  | 200      | 19   | 10  |
| M16  | 100      | 24   | 13  |
| M20  | 50       | 30   | 16  |
| M22  | 100      | 32   | 18  |
| M24  | 75       | 36   | 19  |



How to order or inquire: R830-B1181-2-material code diameter  
 Example: R830-B1181-2-316L10  
 Material codes: 316L for Stainless Steel 316L

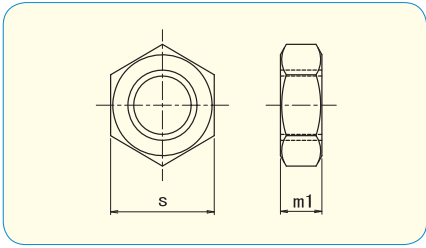
**Material**

**SUS 316L** Stainless Steel A4

|     | Box q'ty | SIZE |     |
|-----|----------|------|-----|
|     |          | s    | m   |
| M8  | 100      | 13   | 6.5 |
| M10 | 100      | 17   | 8   |
| M12 | 100      | 19   | 10  |
| M14 | 100      | 22   | 11  |
| M16 | 100      | 24   | 13  |
| M18 | 100      | 27   | 15  |
| M20 | 100      | 30   | 16  |
| M22 | 100      | 32   | 18  |
| M24 | 100      | 36   | 19  |



# HEX NUT, JIS type 3 JIS B1181 appendix



How to order or inquire: R830-B1181-3-finish code diameter  
 Example: R830-B1181-3-CR3 10  
 Finish codes: CR3 for Zinc 3Cr. Plated, CR3B for Black 3Cr. Plated

How to order or inquire: R830-B1181-3-material code diameter  
 Example: R830-B1181-3-A2 10  
 Material codes: A2 for Stainless Steel A2

● **Material · plating**

Steel Class04 / Zinc 3Cr. Plated  
 Steel Class04 / Zinc Black 3Cr. Plated

● **Material**

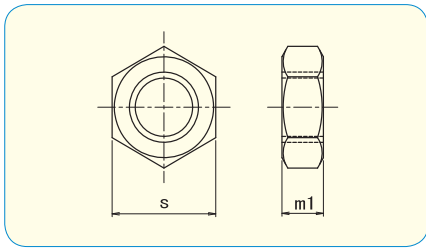
Stainless Steel A2

|      | Box q'ty | SIZE |     |
|------|----------|------|-----|
|      |          | s    | m   |
| M2   | 10000    | 4    | 1.2 |
| M2.3 | 5000     | 4.5  | 1.4 |
| M2.6 | 5000     | 5    | 1.6 |
| M3   | 7000     | 5.5  | 1.8 |
| M3.5 | 5000     | 6    | 2   |
| M4   | 3500     | 7    | 2.4 |
| M5   | 2000     | 8    | 3.2 |
| M6   | 2000     | 10   | 3.6 |
| M8   | 800      | 13   | 5   |
| M10  | 400      | 17   | 6   |
| M12  | 300      | 19   | 7   |
| M14  | 200      | 22   | 8   |
| M16  | 130      | 24   | 10  |
| M20  | 70       | 30   | 12  |

|     | Box q'ty | SIZE |     |
|-----|----------|------|-----|
|     |          | s    | m   |
| M2  | 10000    | 4    | 1.2 |
| M3  | 3000     | 5.5  | 1.8 |
| M4  | 2000     | 7    | 2.4 |
| M5  | 1000     | 8    | 3.2 |
| M6  | 2000     | 10   | 3.6 |
| M8  | 800      | 13   | 5   |
| M10 | 400      | 17   | 6   |
| M12 | 300      | 19   | 7   |
| M16 | 150      | 24   | 10  |
| M20 | 80       | 30   | 12  |
| M22 | 150      | 32   | 13  |
| M24 | 110      | 36   | 14  |
| M30 | 50       | 46   | 18  |



# HEX NUT, JIS type 3 JIS B1181 appendix



How to order or inquire: R830-B1181-3-material code diameter

Example: R830-B1181-3-316L10

Material codes: 316L for Stainless Steel 316L

**Material**

**SUS 316L** Stainless Steel A4

|     | Box q'ty | SIZE |     |
|-----|----------|------|-----|
|     |          | s    | m1  |
| M6  | 100      | 10   | 3.6 |
| M8  | 100      | 13   | 5   |
| M10 | 100      | 17   | 6   |
| M12 | 100      | 19   | 7   |
| M14 | 100      | 22   | 8   |
| M16 | 100      | 24   | 10  |
| M18 | 100      | 27   | 11  |
| M20 | 100      | 30   | 12  |
| M22 | 100      | 32   | 13  |
| M24 | 100      | 36   | 14  |

|     | Box q'ty | SIZE |    |
|-----|----------|------|----|
|     |          | s    | m1 |
| M27 | 100      | 41   | 16 |
| M30 | 100      | 46   | 18 |
| M33 | 100      | 50   | 20 |
| M36 | 100      | 55   | 21 |
| M39 | 100      | 60   | 23 |
| M42 | 100      | 65   | 25 |
| M45 | 100      | 70   | 27 |
| M48 | 100      | 75   | 29 |
| M52 | 100      | 80   | 31 |



How to order or inquire: R830-B1181-3-material code diameter

Example: R830-B1181-3-310 12

Material codes: 310 for Stainless Steel 310

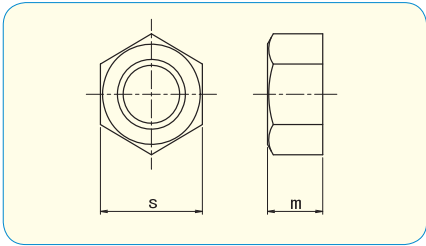
**Material**

**SUS 310S**  
Stainless Steel

|     | Box q'ty | SIZE |     |
|-----|----------|------|-----|
|     |          | s    | m1  |
| M6  | 100      | 10   | 3.6 |
| M8  | 100      | 13   | 5   |
| M10 | 100      | 17   | 6   |
| M12 | 100      | 19   | 7   |
| M14 | 100      | 22   | 8   |
| M16 | 100      | 24   | 10  |
| M18 | 100      | 27   | 11  |
| M20 | 100      | 30   | 12  |
| M22 | 100      | 32   | 13  |
| M24 | 100      | 36   | 14  |
| M27 | 100      | 41   | 16  |
| M30 | 100      | 46   | 18  |



# HEX NUT, height 1xd



How to order or inquire: R830-U5587-material code diameter  
 Example: R830-U5587-316L10  
 Material codes: 316L for Stainless Steel 316L

● **Material**

**SUS 316L** Stainless Steel A4

|     | Box q'ty | SIZE |    |
|-----|----------|------|----|
|     |          | s    | m  |
| M10 | 100      | 17   | 10 |
| M12 | 100      | 19   | 12 |
| M14 | 100      | 22   | 14 |
| M16 | 100      | 24   | 16 |
| M18 | 100      | 27   | 18 |
| M20 | 100      | 30   | 20 |
| M22 | 100      | 32   | 22 |
| M24 | 100      | 36   | 24 |



How to order or inquire: R830-U5587-material code diameter  
 Example: R830-U5587-310 12  
 Material codes: 310 for Stainless Steel 310

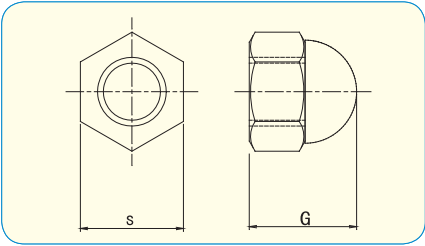
● **Material**

**SUS 310S**  
 Stainless Steel

|     | Box q'ty | SIZE |    |
|-----|----------|------|----|
|     |          | s    | m  |
| M8  | 100      | 13   | 8  |
| M10 | 100      | 17   | 10 |
| M12 | 100      | 19   | 12 |
| M14 | 100      | 22   | 14 |
| M16 | 100      | 24   | 16 |
| M18 | 100      | 27   | 18 |
| M20 | 100      | 30   | 20 |
| M22 | 100      | 32   | 22 |
| M24 | 100      | 36   | 24 |



## DOMED CAP NUT, JIS type 1-2 JIS B1183 appendix



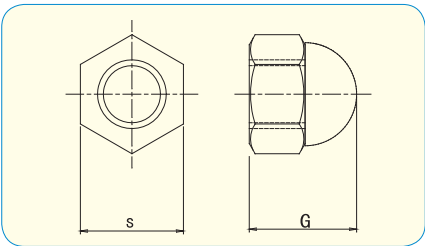
● **Material**  
Stainless Steel A2



How to order or inquire: R830-B1183-1-material code diameter  
Example: R830-B1183-1-A2 10  
Material codes: A2 for Stainless Steel A2

|     | Box q'ty | SIZE |     |
|-----|----------|------|-----|
|     |          | s    | G   |
| M4  | 2000     | 7    | 9.5 |
| M5  | 1000     | 8    | 11  |
| M6  | 500      | 10   | 12  |
| M8  | 500      | 13   | 15  |
| M10 | 300      | 17   | 18  |
| M12 | 200      | 19   | 22  |
| M16 | 150      | 24   | 28  |

## DOMED CAP NUT, JIS type 3-2 JIS B1183 appendix



How to order or inquire: R830-B1183-3-material code diameter  
Example: R830-B1183-3-A2 10  
Material codes: A2 for Stainless Steel A2

● **Material**  
Stainless Steel A2

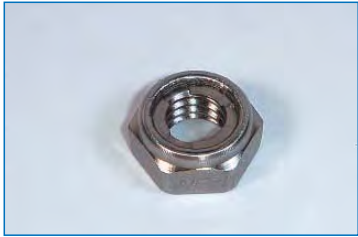
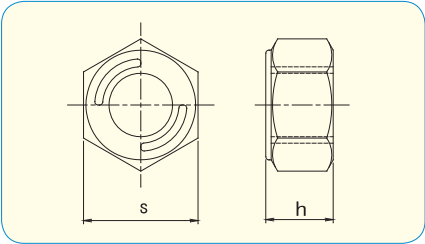
|     | Box q'ty | SIZE |      |
|-----|----------|------|------|
|     |          | s    | G    |
| M4  | 2000     | 7    | 6.2  |
| M5  | 1000     | 8    | 7.5  |
| M6  | 500      | 10   | 9.5  |
| M8  | 500      | 13   | 12.5 |
| M10 | 300      | 17   | 15.5 |
| M12 | 200      | 19   | 18.5 |
| M16 | 150      | 24   | 24   |
| M20 | 100      | 30   | 29   |
| M22 | 80       | 32   | 32.5 |
| M24 | 50       | 36   | 35.5 |
| M30 | 25       | 46   | 45   |

How to order or inquire: R830-B1183-3-material code diameter  
Example: R830-B1183-3-TI 10  
Material codes: TI for Titanium

● **Material**  
**TITAN**

|     | Box q'ty | SIZE |      |
|-----|----------|------|------|
|     |          | s    | G    |
| M6  | 500      | 10   | 9.5  |
| M8  | 500      | 13   | 12.5 |
| M10 | 300      | 17   | 15.5 |
| M12 | 200      | 19   | 18.5 |

# HEX NUT w/Spring Lock



How to order or inquire: R830-980M-finish code diameter  
 Example: R830-980M-CR3 10  
 Finish codes: CR3 for Zinc 3Cr. Plated, CR3B for Black 3Cr. Plated

How to order or inquire: R830-980M-material code diameter  
 Example: R830-980M-A2 10  
 Material codes: A2 for Stainless Steel A2

**Material · plating**

Steel Class6 / Zinc 3Cr. Plated  
 Steel Class6 / Zinc Black 3Cr. Plated

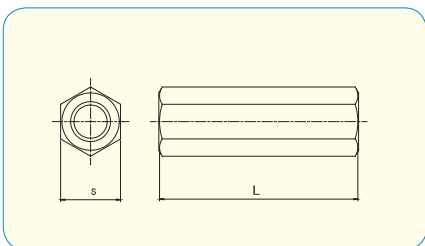
**Material**

Stainless Steel A2

|     | Box q'ty | SIZE |      |
|-----|----------|------|------|
|     |          | s    | h    |
| M3  | 8000     | 5.5  | 3.2  |
| M4  | 4000     | 7    | 3.8  |
| M5  | 2500     | 8    | 4.6  |
| M6  | 1500     | 10   | 5.1  |
| M8  | 1000     | 13   | 7.3  |
| M10 | 600      | 17   | 8.3  |
| M12 | 400      | 19   | 10.5 |
| M14 | 250      | 22   | 12.5 |
| M16 | 150      | 24   | 14.5 |

|     | Box q'ty | SIZE |      |
|-----|----------|------|------|
|     |          | s    | h    |
| M4  | 4000     | 7    | 3.8  |
| M5  | 2500     | 8    | 4.6  |
| M6  | 1500     | 10   | 5.1  |
| M8  | 1000     | 13   | 7.3  |
| M10 | 600      | 17   | 8.3  |
| M12 | 400      | 19   | 10.5 |
| M14 | 250      | 22   | 12.5 |
| M16 | 150      | 24   | 14.5 |
| M18 | 125      | 27   | 16   |
| M20 | 120      | 30   | 17.5 |
| M22 | 80       | 32   | 19.5 |
| M24 | 65       | 36   | 21.5 |
| M30 | 30       | 46   | 27   |

# HEX COUPLING NUT



**Material**  
 Stainless Steel A2



How to order or inquire: R830-6334J-material code diameter x length  
 Example: R830-6334J-A2 8x30  
 Material codes: A2 for Stainless Steel A2

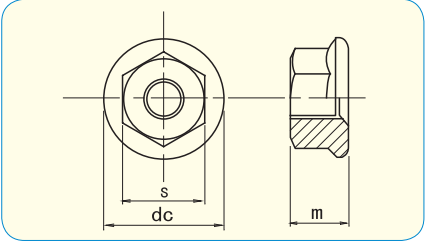
|   | M6 | M8 | M10 | M12 | M16 |
|---|----|----|-----|-----|-----|
| s | 10 | 13 | 17  | 19  | 24  |

pcs / Box

| L \ d | M6  | M8  | M10 | M12 | M16 |
|-------|-----|-----|-----|-----|-----|
| 15    | 600 |     |     |     |     |
| 20    | 450 | 250 | 150 |     |     |
| 25    | 350 | 200 | 125 | 100 |     |
| 30    |     | 175 | 100 | 85  | 50  |
| 40    |     | 125 | 75  | 60  | 35  |
| 50    |     |     | 60  | 50  | 30  |
| 60    |     |     |     | 40  | 30  |



# FLANGE NUT w/Serration



How to order or inquire: R830-HFJN-finish code diameter  
 Example: R830-HFJN-CR3 10  
 Finish codes: CR3 for Zinc 3Cr. Plated, CR3B for Black 3Cr. Plated

How to order or inquire: R830-HFJN-material code diameter  
 Example: R830-HFJN-A2 10  
 Material codes: A2 for Stainless Steel A2

- **Material - plating**  
 Steel Class6 / Zinc 3Cr. Plated  
 Steel Class6 / Zinc Black 3Cr. Plated

- **Material**  
 Stainless Steel A2

|     | Box q'ty | SIZE |     |    |
|-----|----------|------|-----|----|
|     |          | s    | m   | dc |
| M3  | 1500     | 5.5  | 3.7 | 8  |
| M4  | 1000     | 7    | 4.5 | 10 |
| M5  | 500      | 8    | 5.5 | 12 |
| M6  | 500      | 10   | 6   | 13 |
| M8  | 500      | 12   | 7.5 | 17 |
| M10 | 300      | 14   | 9   | 19 |
| M12 | 170      | 17   | 11  | 24 |

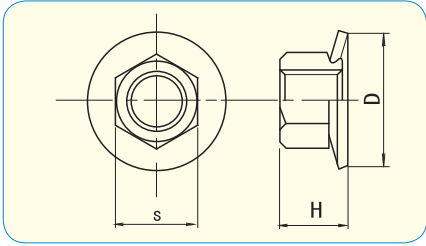
|     | Box q'ty | SIZE |     |    |
|-----|----------|------|-----|----|
|     |          | s    | m   | dc |
| M3  | 2000     | 5.5  | 3.7 | 8  |
| M4  | 1000     | 7    | 4.5 | 10 |
| M5  | 750      | 8    | 5.5 | 12 |
| M6  | 500      | 10   | 6   | 13 |
| M8  | 200      | 12   | 7.5 | 17 |
| M10 | 150      | 14   | 9   | 19 |
| M12 | 100      | 17   | 11  | 24 |

How to order or inquire: R830-HFJN-material code diameter  
 Example: R830-HFJN-TI 8  
 Material codes: TI for Titanium

- **Material**  
**TITAN**

|    | Box q'ty | SIZE |     |    |
|----|----------|------|-----|----|
|    |          | s    | m   | dc |
| M3 | 2000     | 5.5  | 3.7 | 8  |
| M4 | 1000     | 7    | 4.5 | 10 |
| M5 | 750      | 8    | 5.5 | 12 |
| M6 | 500      | 10   | 6   | 13 |
| M8 | 200      | 12   | 7.5 | 17 |

## HEX NUT w/Conical Spring Washer



How to order or inquire: R830-1365J-finish code diameter  
 Example: R830-1365J-CR3 10  
 Finish codes: CR3 for Zinc 3Cr. Plated, CR3B for Black 3Cr. Plated

How to order or inquire: R830-1365J-material code diameter  
 Example: R830-1365J-A2 10  
 Material codes: A2 for Stainless Steel A2

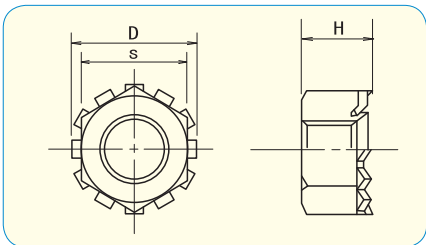
- **Material · plating**  
 Steel / Zinc 3Cr. Plated  
 Steel / Zinc Black 3Cr. Plated

- **Material**  
 Stainless Steel A2

|     | Box q'ty | SIZE |      |    |
|-----|----------|------|------|----|
|     |          | s    | H    | D  |
| M3  | 5000     | 5.5  | 3.3  | 7  |
| M4  | 2500     | 7    | 4.3  | 10 |
| M5  | 1500     | 8    | 5.5  | 12 |
| M6  | 700      | 10   | 6.7  | 14 |
| M8  | 400      | 13   | 8.8  | 18 |
| M10 | 200      | 17   | 10.7 | 22 |
| M12 | 100      | 19   |      | 25 |

|     | Box q'ty | SIZE |      |    |
|-----|----------|------|------|----|
|     |          | s    | H    | D  |
| M4  | 2000     | 7    | 4.3  | 10 |
| M5  | 1000     | 8    | 5.5  | 12 |
| M6  | 700      | 10   | 6.7  | 14 |
| M8  | 300      | 13   | 8.8  | 18 |
| M10 | 150      | 17   | 10.7 | 22 |

## HEX NUT w/Toothed Lock Washer



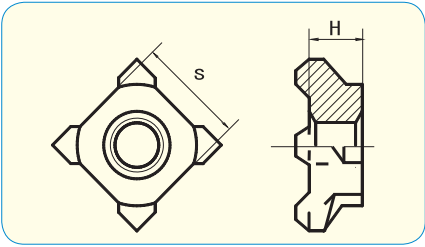
- **Material · plating**  
 Steel / Zinc 3Cr. Plated



How to order or inquire: R830-1364J-finish code diameter  
 Example: R830-1364J-CR3 10  
 Finish codes: CR3 for Zinc 3Cr

|    | Box q'ty | SIZE |     |      |
|----|----------|------|-----|------|
|    |          | s    | H   | D    |
| M3 | 6000     | 5.5  | 3.2 | 6.5  |
| M4 | 2500     | 7    | 4   | 8.2  |
| M5 | 2000     | 8    | 5   | 9.5  |
| M6 | 1000     | 10   | 6.2 | 11.5 |
| M8 | 500      | 12   |     | 15   |

## SQUARE WELD NUT, JIS type 1D JIS B1196 appendix



How to order or inquire: R830-B1196D-finish code diameter  
 Example: R830-B1196D-CR3 10  
 Finish codes: CR3 for Zinc 3Cr. Plated, CR3B for Black 3Cr. Plated

How to order or inquire: R830-B1196D-material code diameter  
 Example: R830-B1196D-A2 10  
 Material codes: A2 for Stainless Steel A2

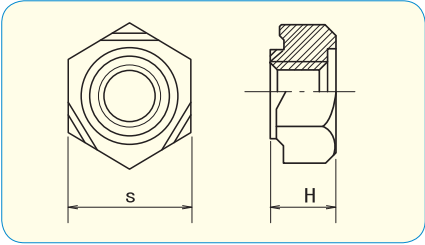
- **Material · plating**  
 Steel / Zinc 3Cr. Plated  
 Steel / Zinc Black 3Cr. Plated

- **Material**  
 Stainless Steel A2

|     | Box q'ty | SIZE |     |
|-----|----------|------|-----|
|     |          | s    | H   |
| M4  | 1000     | 8    | 3.2 |
| M5  | 800      | 9    | 4   |
| M6  | 500      | 10   | 5   |
| M8  | 500      | 12   | 6   |
| M10 | 200      | 14   | 8   |
| M12 | 250      | 17   | 8   |

|     | Box q'ty | SIZE |     |
|-----|----------|------|-----|
|     |          | s    | H   |
| M4  | 1000     | 8    | 3.2 |
| M5  | 800      | 9    | 4   |
| M6  | 500      | 10   | 5   |
| M8  | 500      | 12   | 6   |
| M10 | 400      | 14   | 8   |
| M12 | 200      | 17   | 8   |

## HEX WELD NUT, JIS type 1A JIS B1196 appendix



How to order or inquire: R830-B1196A-finish code diameter  
 Example: R830-B1196A-CR3 10  
 Finish codes: CR3 for Zinc 3Cr. Plated, CR3B for Black 3Cr. Plated

How to order or inquire: R830-B1196A-material code diameter  
 Example: R830-B1196A-A2 10  
 Material codes: A2 for Stainless Steel A2

- **Material · plating**  
 Steel / Zinc 3Cr. Plated  
 Steel / Zinc Black 3Cr. Plated

- **Material**  
 Stainless Steel A2

|     | Box q'ty | SIZE |       |
|-----|----------|------|-------|
|     |          | s    | H     |
| M4  | 1000     | 11   | 5     |
| M5  | 1000     | 11   | 5     |
| M6  | 700      | 13   | 6     |
| M8  | 400      | 15   | 7.5   |
| M10 | 300      | 17   | 9~10  |
| M12 | 200      | 19   | 11~12 |

|    | Box q'ty | SIZE |     |
|----|----------|------|-----|
|    |          | s    | H   |
| M6 | 300      | 13   | 6   |
| M8 | 300      | 15   | 7.5 |