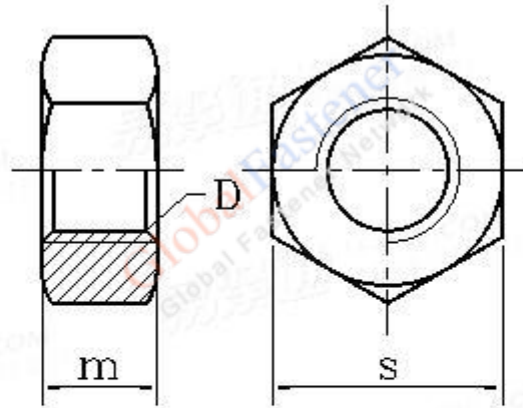


单位: mm

公称直径 D	螺距 P	m		s		每1000件钢 制品的质量 ≈kg	公称直径 D	螺距 P	m		s		每1000件钢 制品的质量 ≈kg
		max	min	max	min				max	min	max	min	
M1.6	0.35	1.3	1.05	3.2	3.02	0.05	M22	2.5	19.4	18.1	34	33	82
M2	0.4	1.6	1.35	4	3.82	0.103	M24	3	21.5	20.2	36	35	100.5
M2.5	0.45	2	1.75	5	4.82	0.212	M27	3	23.8	22.5	41	40	147.3
M3	0.5	2.4	2.15	5.5	5.32	0.301	M30	3.5	25.6	24.3	46	45	205.2
M3.5	0.6	2.8	2.55	6	5.82	0.411	M33	3.5	28.7	27.4	50	49	268.8
M4	0.7	3.2	2.9	7	6.78	0.643	M36	4	31	29.4	55	53.8	351.7
M5	0.8	4.7	4.4	8	7.78	1.19	M39	4	33.4	31.8	60	58.8	455.9
M6	1	5.2	4.9	10	9.78	2.19	M42	4.5	34	32.4	65	63.1	534.8
M8	1.25	6.8	6.44	13	12.73	4.74	M45	4.5	36	34.4	70	68.1	663.1
M10	1.5	8.4	8.04	16	15.73	8.91	M48	5	38	36.4	75	73.1	816.8
M12	1.75	10.8	10.37	18	17.73	13.67	M52	5	42	40.4	80	78.1	1012
M14	2	12.8	12.1	21	20.67	21.63	M56	5.5	45	43.4	85	82.8	1202
M16	2	14.8	14.1	24	23.67	32.66	M60	5.5	48	46.4	90	87.8	1418
M18	2.5	15.8	15.1	27	26.16	42.31	M64	6	51	49.1	95	92.8	1659
M20	2.5	18	16.9	30	29.16	58.37							



Unit: mm

D	P	m		S		Weight of per 1000 steel products≈kg
		max	min	max	min	
M6	0.35	1.3	1.05	3.2	3.02	0.05
M8	0.4	1.6	1.35	4	3.82	0.103
M10	0.45	2	1.75	5	4.82	0.212
M12	0.5	2.4	2.15	5.5	5.32	0.301
M14	0.6	2.8	2.55	6	5.82	0.411
M16	0.7	3.2	2.9	7	6.78	0.643
M18	0.8	4.7	4.4	8	7.78	1.19
M20	1	5.2	4.9	10	9.78	2.19
M22	1.25	6.8	6.44	13	12.73	4.74
M24	1.5	8.4	8.04	16	15.73	8.91
M27	1.75	10.8	10.37	18	17.73	13.67
M30	2	12.8	12.1	21	20.67	21.63
M33	2	14.8	14.1	24	23.67	32.66
M36	2.5	15.8	15.1	27	26.16	42.31
M39	2.5	18	16.9	30	29.16	58.37
M42	2.5	19.4	18.1	34	33	82
M45	3	21.5	20.2	36	35	100.5
M48	3	23.8	22.5	41	40	147.3
M52	3.5	25.6	24.3	46	45	205.2
M56	3.5	28.7	27.4	50	49	268.8
M60	4	31	29.4	55	53.8	351.7
M64	4	33.4	31.8	60	58.8	455.9
M68	4.5	34	32.4	65	63.1	534.8
M72	4.5	36	34.4	70	68.1	663.1
M76	5	38	36.4	75	73.1	816.8
M80	5	42	40.4	80	78.1	1012
M84	5.5	45	43.4	85	82.8	1202
M88	5.5	48	46.4	90	87.8	1418
M92	6	51	49.1	95	92.8	1659